



The project has been registered with MahaRERA Reg. No.: P51800032085.  
Information available at <https://maharera.mahaonline.gov.in>

**Site Address:** Asmi Legend, Plot No. B-5, Mahakali Mandir Marg, Laxmi Nagar, Off Link Road, Village Pahadi, Goregaon (W), Mumbai - 400 104.

**Registered Office:** Shop No. 6, Asmi Dreamz, Junction of S. V. Road & M. G. Road, Goregaon (W), Mumbai - 400 104.

**Email:** [info@asmigroup.co.in](mailto:info@asmigroup.co.in) | **Website:** [www.asmigroup.co.in](http://www.asmigroup.co.in) | **Call:** 022-2872 9092 / 93 / 94 | **Sales Office:** 022-4972 9141

Disclaimer: All the images, pictorials, visuals, elevations, perspectives, illustrations, model, stock images, specifications, plans, designs, drawings, dimensions, maps, facilities, amenities, features, and other information / details herein are conceptual, indicative and for representation purpose only and are not to scale, and is subject to the approval of the respective authorities. The Promoters / Developers / Architect reserve the right to add, alter, delete or replace any of these in the interest of the development, without any notice or obligation. All the matter presented here at the exhibition does not constitute any offer or contract of any nature whatsoever between the Promoters / Developers and the recipient. All transactions shall be subject to and governed by the terms & conditions of the Agreement for Sale to be entered into between the parties. Stock images used in this profile are for representational purpose only.



GET LINKED TO LIFE



A name that's linked with growth.



Asmi Group of Companies is one of the fastest-growing real estate developers in suburban Mumbai. With over 35 years of experience, the cluster of 10 companies continue to serve in real estate through innovative construction concepts and affordable luxury.

Under the outstanding leadership of Mr. Ajay Dedhia, the company has successfully delivered more than 5 Lakh SQ. FT. across industrial, commercial and residential domain.

The Group holds a strong admiration among the people who believe in integrity and action. It aims to become a synonym for trust with its customer centric approach by making luxury living affordable for all.

COMPLETED PROJECTS

**ASMI INDUSTRIAL COMPLEX  
GOREGAON (W)**

**Industrial / Residential**



Actual image

**VIHAN  
GOREGAON (E)**

**Commercial / Residential**



Actual image

COMPLETED PROJECTS

**ASMI DREAMZ  
GOREGAON (W)**

**Commercial / Residential / Retail**



Actual image

**ASMI  
GOREGAON (W)**

**Residential**



Actual image

**ASMI GARDEN  
TILAK NAGAR, CHEMBUR**

**Residential (A & B Wing) / Commercial**



Actual image

LANDMARKS OF  
INNOVATION,  
ASSURED





**GET LINKED TO  
CONNECTIVITY**



**GET LINKED TO  
LIFESTYLE**



**GET LINKED TO  
SHOPPING**



**GET LINKED TO  
RECREATION**



**GET LINKED  
TO LIFE**



**GET LINKED TO  
CONVENIENCE**



## Get linked to a dream lifestyle!

Your life becomes complete  
When it's linked to your dreams  
Where you have ample of time  
With accessibility by your side  
Where you have limitless choices  
With every convenience nearby  
Where every day is full of fun  
With amenities for everyone.



Get linked to happiness with  
Goregaon's most promising lifestyle.

INTRODUCING



1 & 2 BED RESIDENCES IN GOREGAON WEST

Come and fill your life with the goodness of modern living at Asmi Legend. An icon of sheer lifestyle surrounded by comforts and conveniences. Strategically positioned in a bustling locale of Goregaon (W) on Link Road, it offers finely crafted 1 and 2 bed residences with a plethora of modern-day amenities for higher living.







## Get linked to an active and healthy lifestyle.

Carve the best version of yourself with a plethora of amenities that rejuvenate your mind, body and soul.

- Fitness Centre
- Indoor Games
- Outdoor Kids' Play Area

Indoor games

Fitness Centre







- 1 PARTY LAWN
- 2 GAZEBO SITTING
- 3 REFLEXOLOGY PATH

- 4 LEISURE AREA
- 5 OBSERVATORY DECK
- 6 YOGA AND MEDITATION CORNER

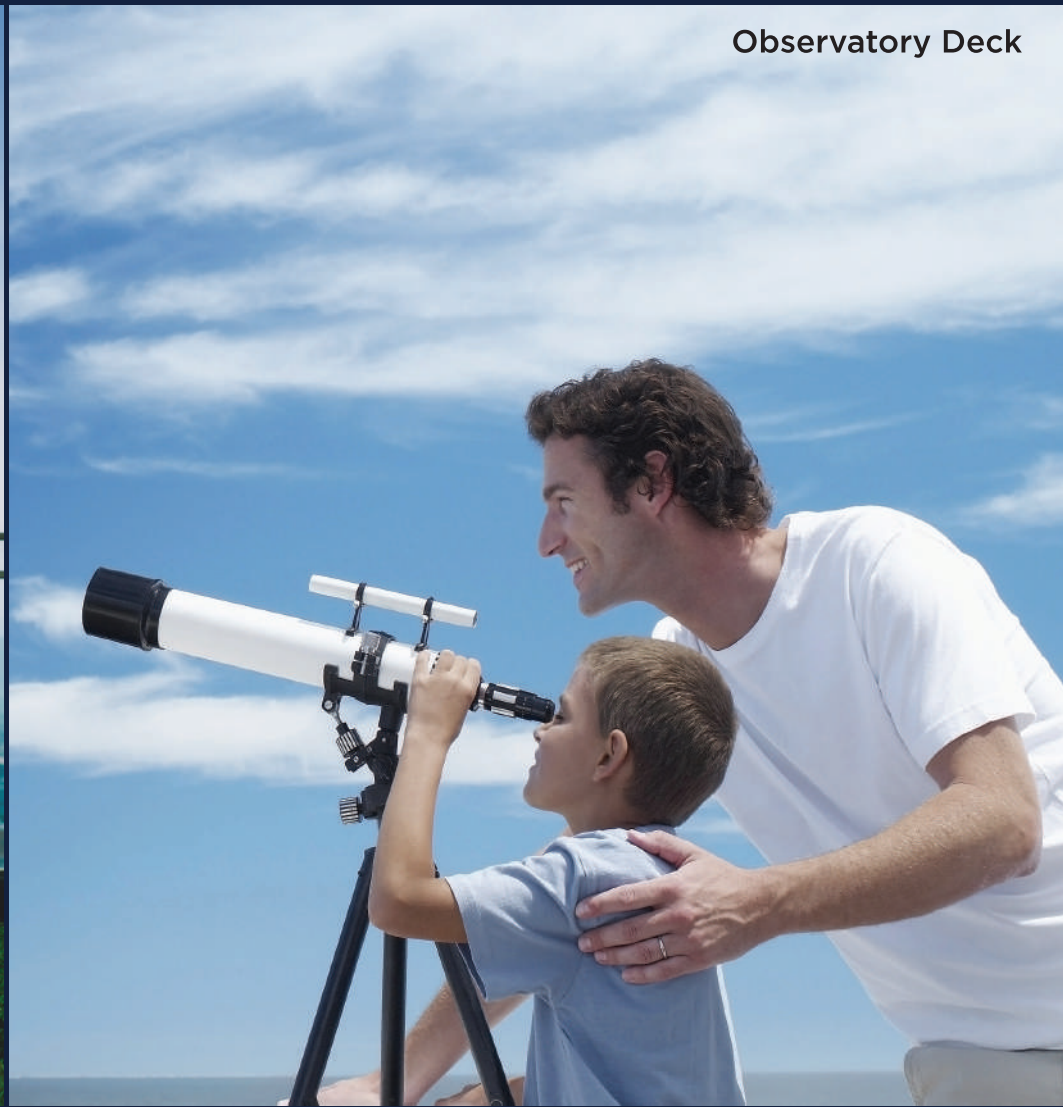
- 7 OUTDOOR KIDS' PLAY AREA
- 8 LANDSCAPED GARDEN
- 9 PARKING

A level reserved for  
higher leisure





Yoga and Meditation Corner



Observatory Deck



Party Lawn



Gazebo Sitting



Reflexology Path

Get linked to  
the finest experiences  
with modern-day  
amenities.

Make your everyday an enriching  
experience with thoughtfully designed  
amenities for everyone.

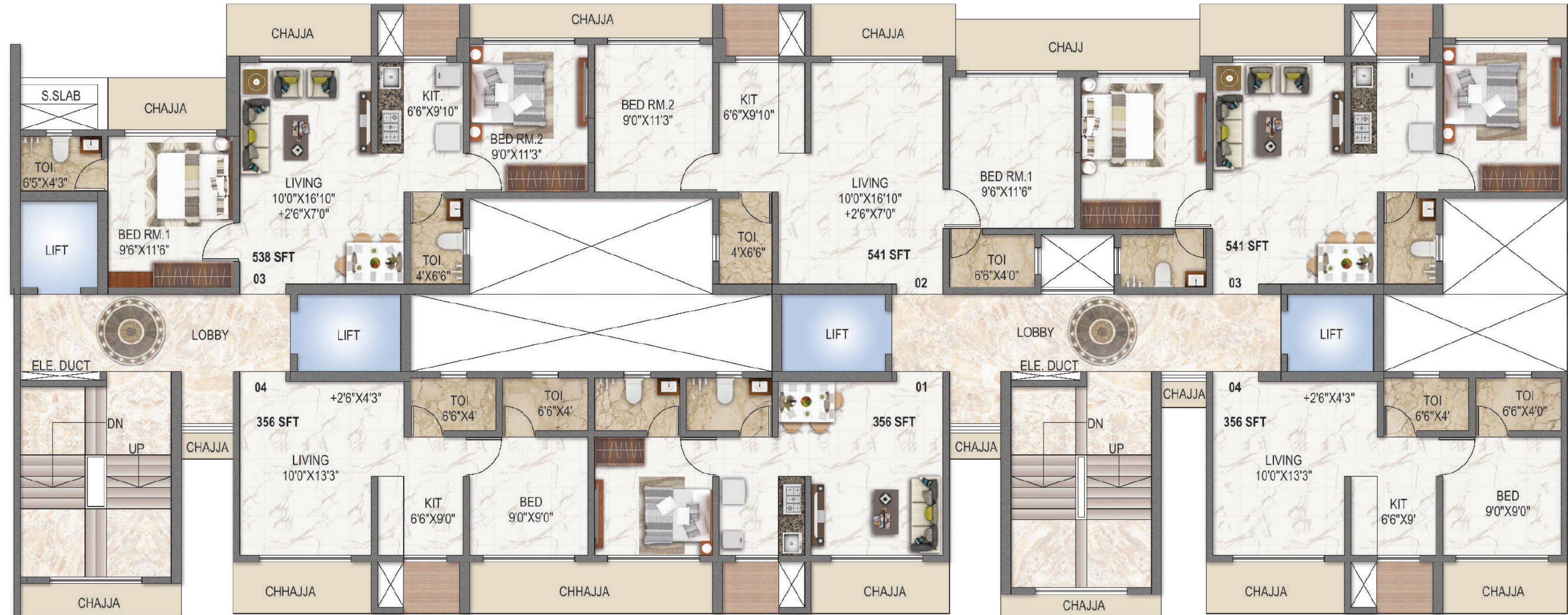
TERRACE AMENITIES

- Yoga and Meditation Corner
- Party Lawn
- Gazebo Sitting
- Observatory Deck
- Reflexology Path



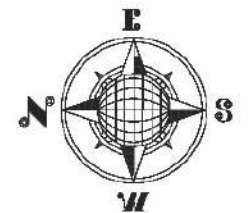


# TYPICAL FLOOR PLAN - 2<sup>nd</sup> to 4<sup>th</sup> Floor Plan (Wing - B & C)



WING-B

WING-C







# TYPICAL FLOOR PLAN - 5<sup>th</sup> Floor Plan (Wing - B & C)



WING-B

WING-C







# TYPICAL FLOOR PLAN - 6<sup>th</sup> to 20<sup>th</sup> Floor Plan (Wing - B & C)



WING-B

WING-C







# ISOMETRIC PLAN



Configuration	Rera Carpet Area	
2 BHK	634 Sq. Ft.	58.89 Sq. Mtr.



# ISOMETRIC PLAN



Configuration	Rera Carpet Area	
1 BHK	356 Sq. Ft.	33.10 Sq. Mtr.

Configuration	Rera Carpet Area	
2 BHK	541 Sq. Ft.	50.23 Sq. Mtr.





Get linked to  
superior living  
with global brands.

**SPECIFICATIONS:**

- Vitrified flooring tiles in every apartment.
- Designer tiles in bathroom and toilets.
- Granite kitchen platform with S.S. Sink and service platform.
- Provision for concealed wiring with adequate points for television, Refrigerator, telephone etc.
- Concealed plumbing work with quality sanitary ware and C.P. Fittings of reputed make.
- Elevators of reputed make.
- Powder coated / Anodized aluminum sliding window with Marble frame and railing for safety.
- Decorative main door and flush doors for toilets and bedroom.
- External painting with good quality paint.
- Internal wall with POP and good quality paint finished.
- Designer entrance lobby.
- Intercom connection from security cabin to individual flats.
- Society office.
- Back-up cable for lifts, water pumps and lighting in all the common areas.
- CCTV in common areas.





## OUR ASSOCIATES

**Jalaram**<sup>®</sup>  
exclusive wood & veneers

**Vinay**  
ELECTRICAL SOLUTIONS

**VIHAN**  
SPREAD THE LIGHT

**MARU**<sup>®</sup>  
ELECTRICAL ACCESSORIES

## OUR TEAM

DESIGN ARCHITECT  
**ARCHGROUP INTERNATIONAL**  
**HEMANT TALATI**

ARCHITECT  
**AAKAR ARCHITECTS & CONSULTANTS**  
**SHILP ASSOCIATES**  
**VASTU KHUBI**

CONTRACTORS  
**SENGHANI CREATORS PVT. LTD.**  
**SG CONSTRUCTION**  
**RAMESHWARY CONSTRUCTIONS**  
**ATHARVA CONSTRUCTION**

INTERIOR DESIGNER  
**ASHOK KAVA - K. ASHOK ASSOCIATES**

SOLICITOR  
**KRISHNA TANNA ASSOCIATES**

R.C.C. CONSULTANT  
**M/S SURA & ASSOCIATES**

LEGAL ADVISOR  
**MANIAR SRIVASTAVA ASSOCIATES**



Get linked to  
convenience by  
living on  
Link Road.

Cherish a handpicked location surrounded by Transit Hubs, Metro, Civic and Social amenities. Here, you will have unlimited choices when it comes to Education, Healthcare, Shopping and Leisure.

